

PRIME OUTPARCEL LOCATION IN GAFFNEY

1529 W FLOYD BAKER BLVD | GAFFNEY, SC 29341



PRIME OUTPARCEL LOCATION IN GAFFNEY

1529 W FLOYD BAKER BLVD | GAFFNEY, SC 29341

PROPERTY / LEASING INFORMATION

Former Sonic Drive-Thru located at 1529 West Floyd Baker Boulevard in Gaffney, SC, is in a prime retail location with excellent visibility and access. This site includes an existing drive-thru and close proximity to other retailers such as Wal-Mart, Ingles, Belk, Lowe's Home Improvement

PROPERTY HIGHLIGHTS

- 1,494 sf free standing building with drive thru on a 0.6 acre parcel
- Positioned along the Floyd Baker Retail corridor in front of the Wal-Mart center which features a fully signalized traffic intersection.
- The building is partially equipped and available immediately

CO-TENANTS



DEMOGRAPHICS (2024)

	1 MILE	3 MILE	5 MILE
POPULATION	3,409	19,490	28,994
AVERAGE HH INCOME	\$56,093	\$57,608	\$65,149

© 2025 The Providence Group. All rights reserved. The information above has been obtained by sources deemed reliable. While we do not doubt its accuracy, we have not verified it and make no guarantee, warranty, or representation of it. It is your responsibility to independently confirm its accuracy and completeness. You and your advisors should conduct a careful, independent investigation of the property to determine to your satisfaction the suitability of the property for your needs.



THE PROVIDENCE GROUP
EXCELLENCE IN RETAIL REAL ESTATE

PROUD PARTNER
XTEAM
RETAIL ADVISORS



CONTACT

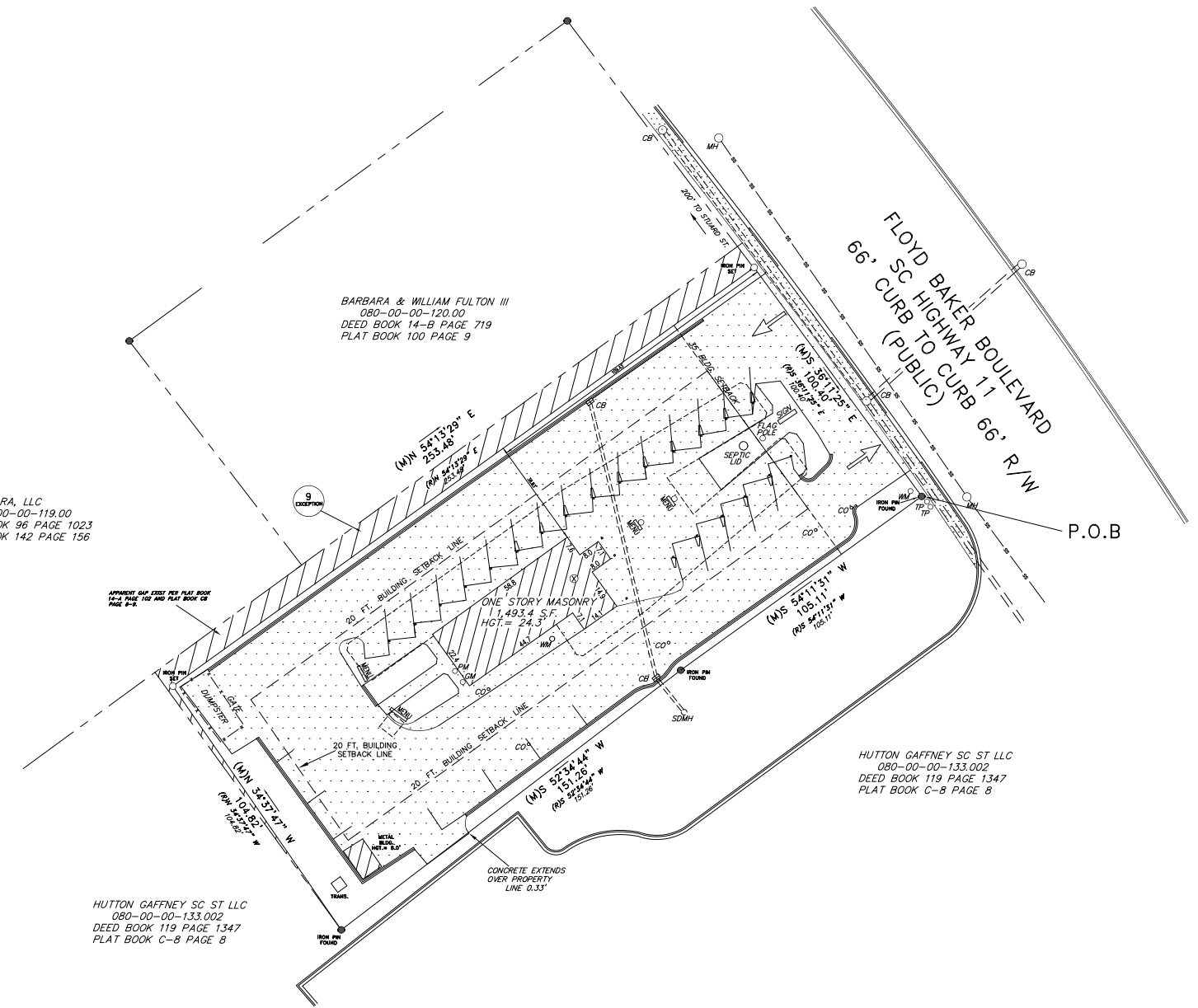
Garland Hughes | 704.644.4596
ghughes@providencegroup.com

PRIME OUTPARCEL LOCATION IN GAFFNEY

1529 W FLOYD BAKER BLVD | GAFFNEY, SC 29341



THE PROVIDENCE GROUP
EXCELLENCE IN RETAIL REAL ESTATE



CONTACT

Garland Hughes | 704.644.4596
ghughes@providencegroup.com

YMCA

85



Gaffney Outlet Marketplace

- The Big E
- five BELOW
- POLO MICHAEL KORS
- TOMMY HILFINGER
- adidas
- AÉROPOSTALE
- H&M carter's
- NIKE POTTERY BARN
- kate spade
- AMERICAN EAGLE OUTFITTERS
- SKECHERS
- Rug&Home

62,400 VPD

Peachtree Marketplace

- ingles
- belk
- CAIO
- LOWE'S

79,100 VPD



HARBOR FREIGHT

Kimbell's FURNITURE

SITE

Piedmont Plaza S/C

- Walmart SUPERCENTER
- Shoe Show
- SALLY BEAUTY
- Mobile
- DOLLAR TREE

Cherokee Plaza S/C

- BIG LOTS!
- goodwill
- planet fitness
- TRACTOR SUPPLY CO
- DOLLAR GENERAL

Advance! Auto Parts!

- HIBBETT SPORTS
- GAME TESTED. ATHLETE APPROVED.
- goodwill
- Citi Trends

ingles

DOLLAR GENERAL

24,700 VPD

Walgreens

O'Reilly AUTO PARTS

Cherokee Ave 10,700 VPD

AutoZone

FAMILY DOLLAR

Hyatt St 11,900 VPD

S Granard St

© 2025 The Providence Group. All rights reserved. The information above has been obtained by sources deemed reliable. While we do not doubt its accuracy, we have not verified it and make no guarantee, warranty, or representation of it. It is your responsibility to independently confirm its accuracy and completeness. You and your advisors should conduct a careful, independent investigation of the property to determine to your satisfaction the suitability of the property for your needs.

CONTACT

Garland Hughes | 704.644.4596
ghughes@providencegroup.com



300 West Summit Ave | Suite 250 | Charlotte, North Carolina 28203
www.PROVIDENCEGROUP.COM

