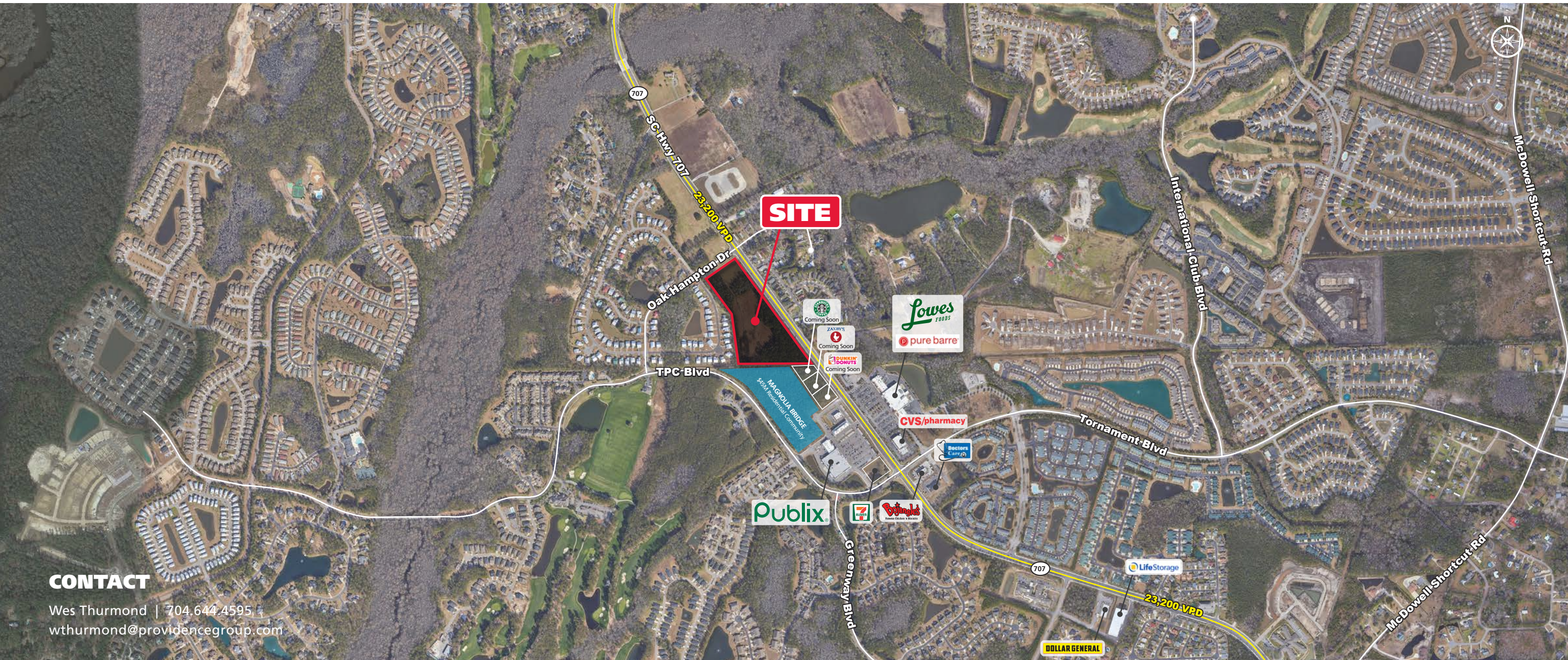


# 14 ACRE NEW DEVELOPMENT - MURRELLS INLET, SC

INTERSECTION OF 707 AND OAK HAMPTON DR, MURRELLS INLET, SC 29576



## CONTACT

Wes Thurmond | 704.644.4595  
wthurmond@providencegroup.com



300 West Summit Ave | Suite 250 | Charlotte, North Carolina 28203  
WWW.PROVIDENCEGROUP.COM

**AVAILABLE**  
FOR LEASE

PROUD PARTNER  
**XTEAM**  
RETAIL ADVISORS



# 14 ACRE NEW DEVELOPMENT IN MURRELLS INLET, SC

INTERSECTION OF 707 AND OAK HAMPTON DR  
MURRELLS INLET, SC 29576

## PROPERTY / LEASING INFORMATION

14 acre new development site

Outparcels and anchor space available

Full access from Oak Hampton Dr.

Strong Income demographics in 5 mile radius

Cross access drive planned with Publix anchor center

Close proximity to daily needs shopping, including:



DEMOGRAPHICS (2022)	1 MILE	3 MILE	5 MILE
POPULATION	5,495	33,607	62,147
AVERAGE HH INCOME	\$90,856	\$84,280	\$76,381
MEDIAN HH INCOME	\$77,543	\$71,673	\$66,453
BUSINESS ESTABLISHMENTS	75	900	1,702
DAYTIME EMPLOYMENT	643	6,532	12,162

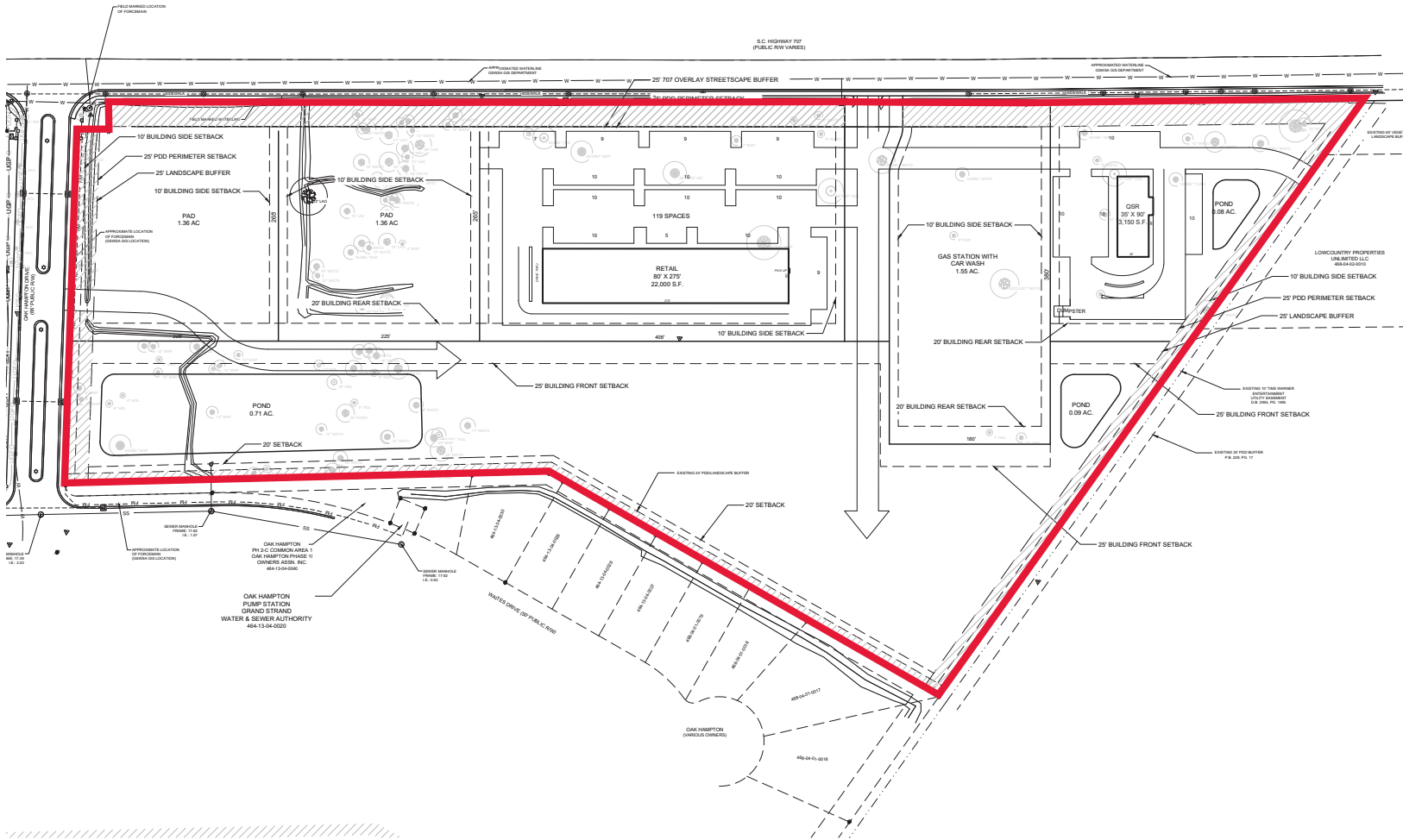
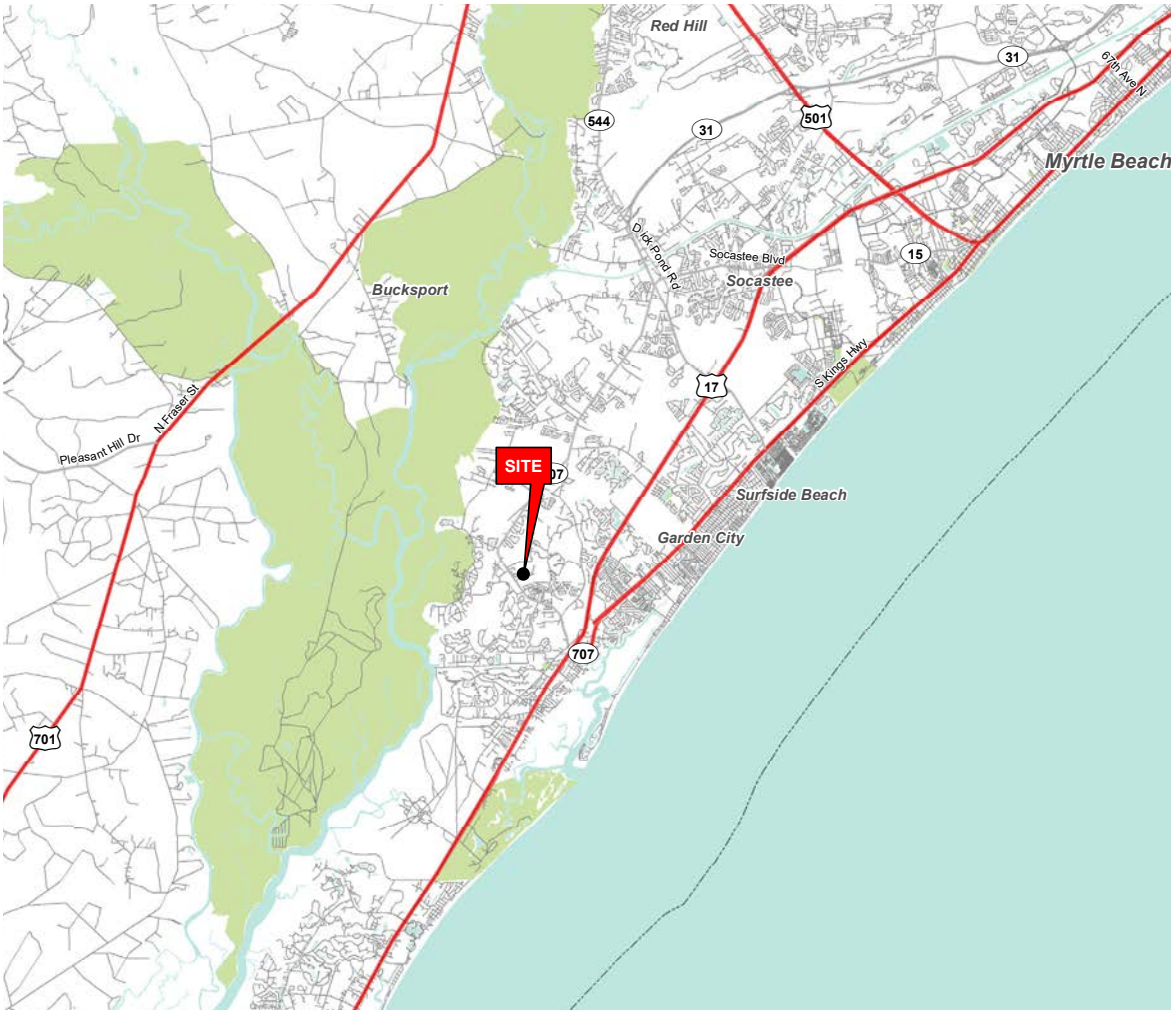


© 2023 The Providence Group. All rights reserved. The information above has been obtained by sources deemed reliable. While we do not doubt its accuracy, we have not verified it and make no guarantee, warranty, or representation of it. It is your responsibility to independently confirm its accuracy and completeness. You and your advisors should conduct a careful, independent investigation of the property to determine to your satisfaction the suitability of the property for your needs.



# 14 ACRE NEW DEVELOPMENT - MURRELLS INLET, SC

INTERSECTION OF 707 AND OAK HAMPTON DR | MURRELLS INLET, SC 29576



© 2023 The Providence Group. All rights reserved. The information above has been obtained by sources deemed reliable. While we do not doubt its accuracy, we have not verified it and make no guarantee, warranty, or representation of it. It is your responsibility to independently confirm its accuracy and completeness. You and your advisors should conduct a careful, independent investigation of the property to determine to your satisfaction the suitability of the property for your needs.



## CONTACT

Wes Thurmond | 704.644.4595  
wthurmond@providencegroup.com



