

OUTPARCEL AVAILABLE | SENECA, SC

APPLEWOOD SHOPPING CENTER

285 Applewood Center Pl | Seneca, SC 29678



Keowee Village
FOOD LION
FAMILY DOLLAR
LOWE'S
 Tuesday Morning
 FARMERS home FURNITURE
STAPLES planet fitness
 Advance Auto Parts

CONTACT
 Spencer Brown | 704.644.4582
 sbrown@providencegroup.com
 Eric Howell | 704.644.4584
 ehowell@providencegroup.com

Sandifer Blvd **15,900 VPD**

APPLEWOOD SHOPPING CENTER OUTPARCEL | SENECA, SC

285 Applewood Center Pl | Seneca, SC 29678



PROPERTY DETAILS

- Up to 3,500 SF available
- Drive-thru available
- Site will cross park with Applewood Shopping Center
- BTS or Ground Lease only
- Call for pricing

PROPERTY HIGHLIGHTS

- Outparcel to a 245,000 SF shopping center anchored by Belk, Hobby Lobby, PetSmart and Aldi
- Site is across the street from Prisma Health Oconee Memorial Hospital (169 beds)
- Full movement access from Sandifer Blvd (Hwy 123) with 15,900 VPD

DEMOGRAPHICS (2021)

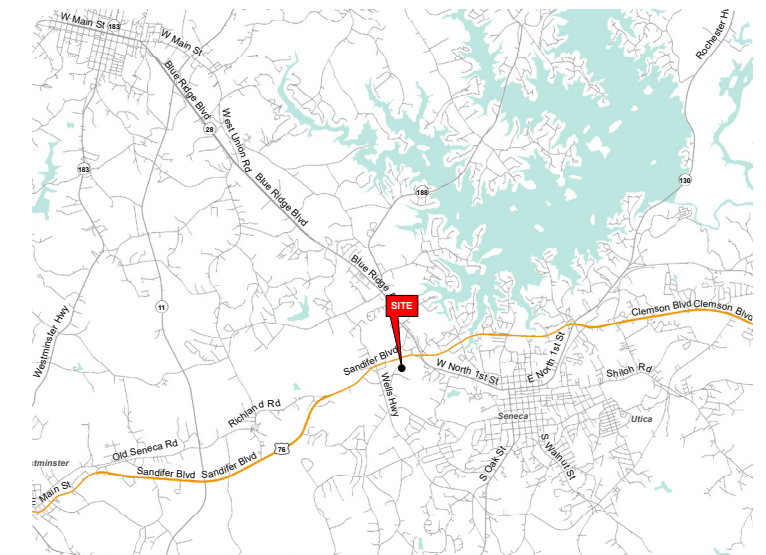
	3 MILE	5 MILE	10 MILE
POPULATION	13,188	26,038	78,282
AVERAGE HH INCOME	\$64,347	\$65,040	\$65,905
MEDIAN HH INCOME	\$45,703	\$47,007	\$46,028
BUSINESS ESTABLISHMENTS	1,039	1,369	2,741
DAYTIME EMPLOYMENT	11,588	14,456	27,008



CONTACT

Spencer Brown | 704.644.4582
sbrown@providencegroup.com

Eric Howell | 704.644.4584
ehowell@providencegroup.com



© 2022 The Providence Group. All rights reserved. The information above has been obtained by sources deemed reliable. While we do not doubt its accuracy, we have not verified it and make no guarantee, warranty, or representation of it. It is your responsibility to independently confirm its accuracy and completeness. You and your advisors should conduct a careful, independent investigation of the property to determine to your satisfaction the suitability of the property for your needs.



SITE

15,900 VPD
Sandifer Blvd

MATTRESS FIRM

T-Mobile

GameStop

FULL ACCESS

belk

GNC
GENERAL NUTRITION CENTERS
The UPS Store
HIBBETT SPORTS
GAME TESTED. ATHLETE APPROVED.

PET SMART

ALDI

DOLLAR TREE

Shoe Show
Pizzatit
Bath & Body Works

HOBBY LOBBY

AspenDental

FULL ACCESS

FULL ACCESS



CONTACT

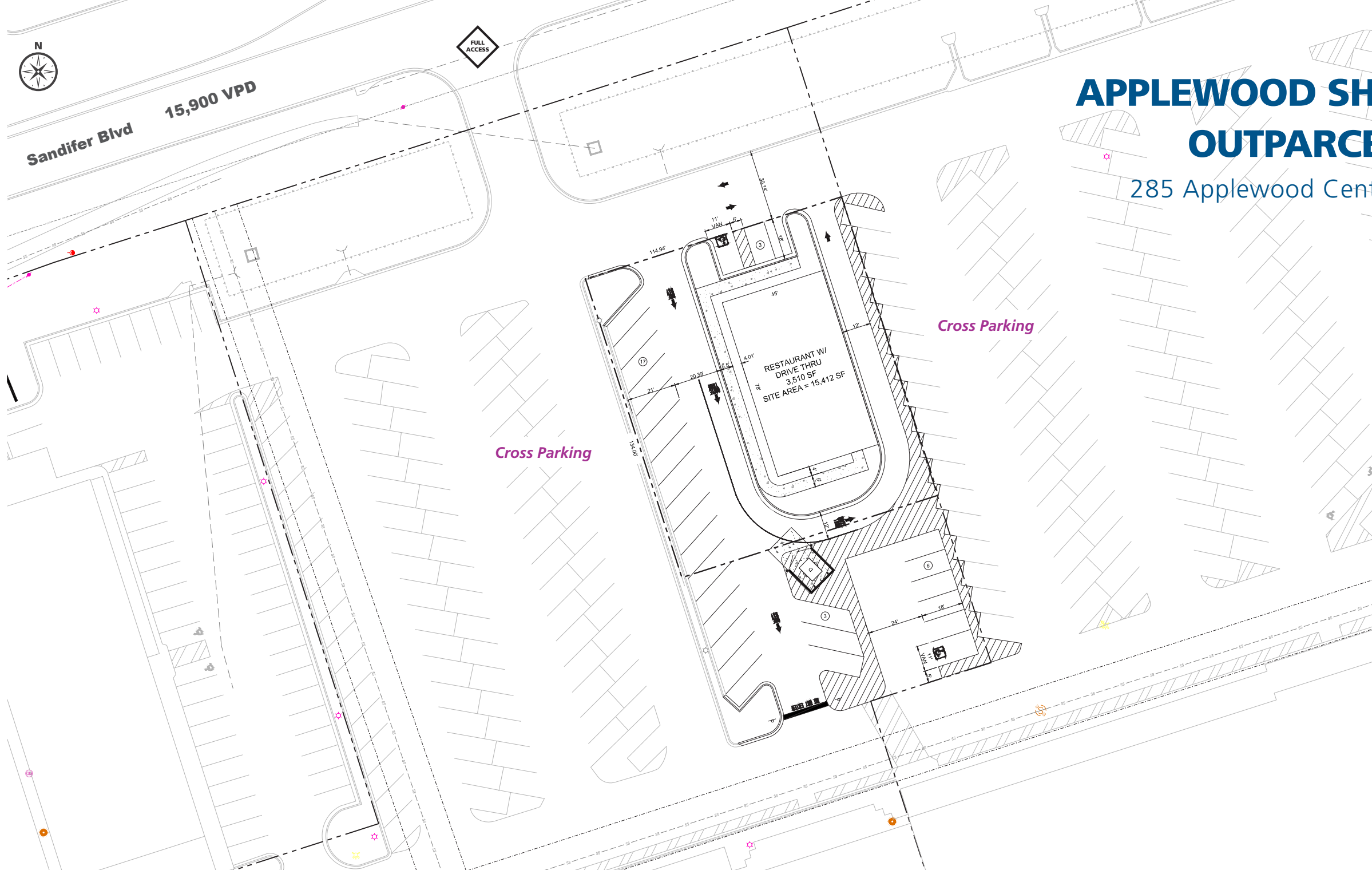
Spencer Brown | 704.644.4582

sbrown@providencegroup.com

Eric Howell | 704.644.4584

ehowell@providencegroup.com

© 2022 The Providence Group. All rights reserved. The information above has been obtained by sources deemed reliable. While we do not doubt its accuracy, we have not verified it and make no guarantee, warranty, or representation of it. It is your responsibility to independently confirm its accuracy and completeness. You and your advisors should conduct a careful, independent investigation of the property to determine to your satisfaction the suitability of the property for your needs.



APPLEWOOD SHOPPING CENTER OUTPARCEL | SENECA, SC

285 Applewood Center Pl | Seneca, SC 29678

CONTACT

Spencer Brown | 704.644.4582
sbrown@providencegroup.com

Eric Howell | 704.644.4584
ehowell@providencegroup.com

© 2022 The Providence Group. All rights reserved. The information above has been obtained by sources deemed reliable. While we do not doubt its accuracy, we have not verified it and make no guarantee, warranty, or representation of it. It is your responsibility to independently confirm its accuracy and completeness. You and your advisors should conduct a careful, independent investigation of the property to determine to your satisfaction the suitability of the property for your needs.



SITE

Applewood Shopping Center
HOBBY LOBBY **belk**
PETSMART **ALDI**
DOLLAR TREE
MATTRESS FIRM
GameStop
 T-Mobile

Keowee Village
FOOD LION
FAMILY DOLLAR
LOWE'S
 Tuesday Morning
FARMERS HOME FURNITURE
STAPLES **planet fitness**
 Advance Auto Parts

CONTACT

Eric Howell | 704.644.4584
 ehowell@providencegroup.com

Spencer Brown | 704.644.4582
 sbrown@providencegroup.com