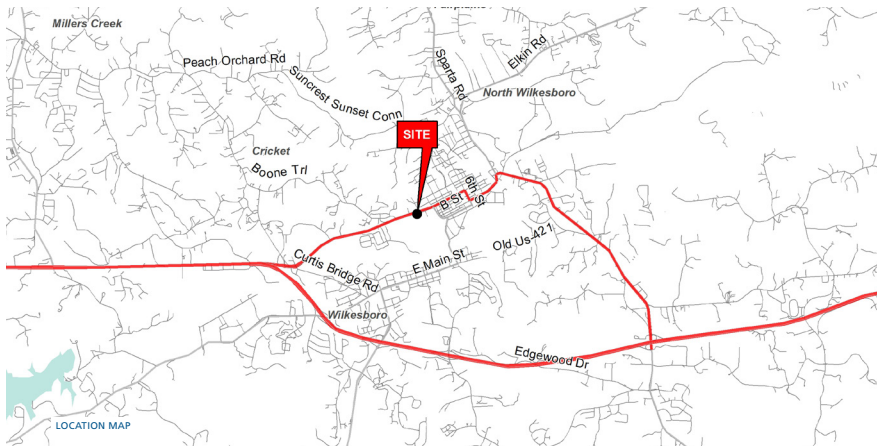




FORMER RITE AID AVAILABLE

1350 WEST D STREET | N WILKESBORO, NORTH CAROLINA 28659



PROPERTY INFORMATION

SPACE AVAILABLE:	10,908 SF
SUBLEASE EXPIRATION:	01 / 31 / 2024
MODIFIED GROSS RENT:	\$6.50 / SF
48 parking spaces	

*ALL OFFERS ARE SUBJECT TO APPROVAL BY
WALGREENS REAL ESTATE COMMITTEE

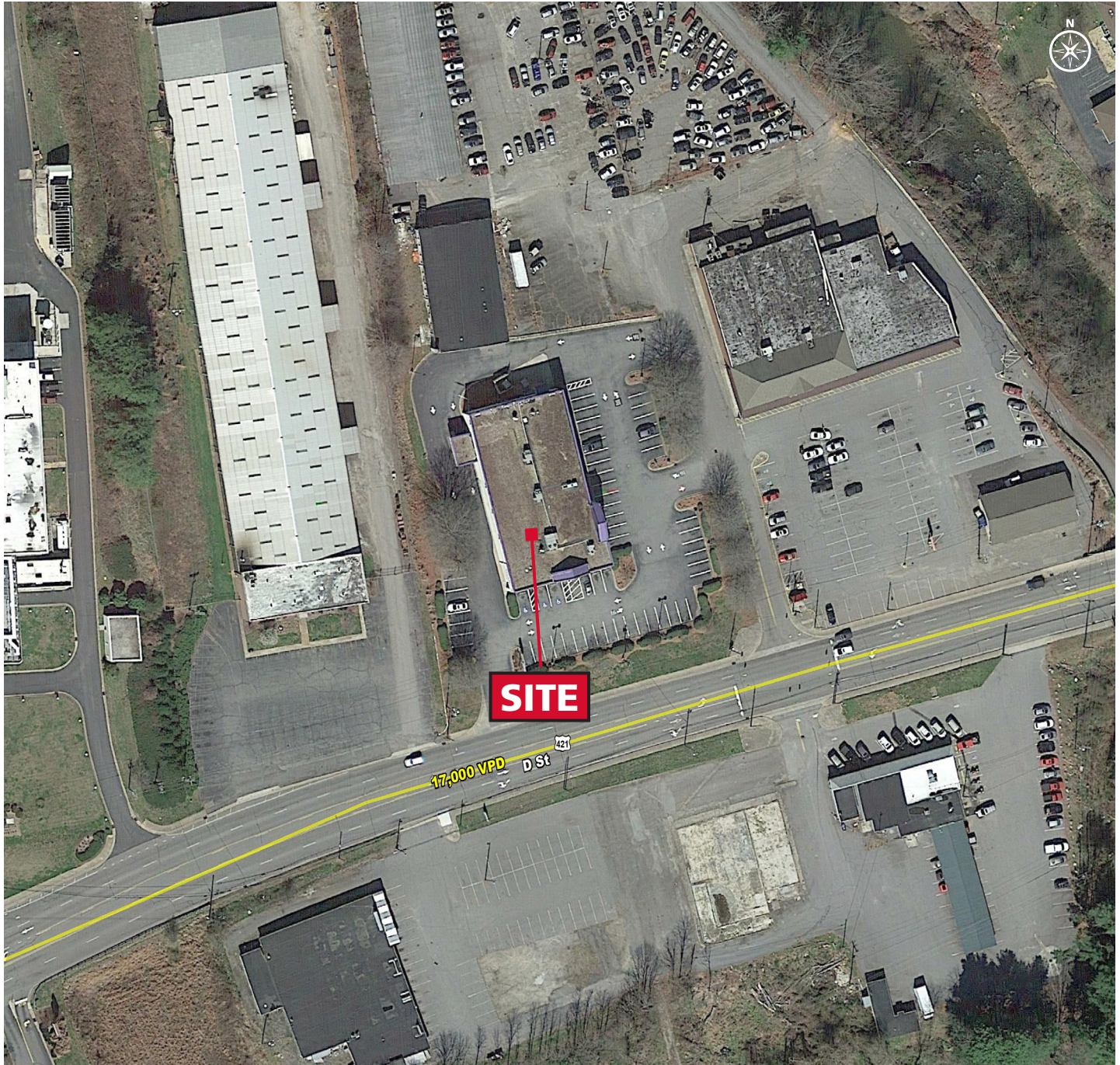
DEMOGRAPHICS (2019)

	1 MILE	3 MILE	5 MILE
POPULATION	2,909	13,871	27,373
AVERAGE HH INCOME	\$44,794	\$46,155	\$56,058
MEDIAN HH INCOME	\$45,187	\$42,544	\$45,330
BUSINESS ESTABLISHMENTS	546	1,261	1,481
DAYTIME EMPLOYMENT	4,777	15,817	17,884

© 2020 The Providence Group. All rights reserved. The information above has been obtained by sources deemed reliable. While we do not doubt its accuracy, we have not verified it and make no guarantee, warranty, or representation of it. It is your responsibility to independently confirm its accuracy and completeness. You and your advisors should conduct a careful, independent investigation of the property to determine to your satisfaction the suitability of the property for your needs.

FORMER RITE AID AVAILABLE

1350 WEST D STREET | N WILKESBORO, NORTH CAROLINA 28659



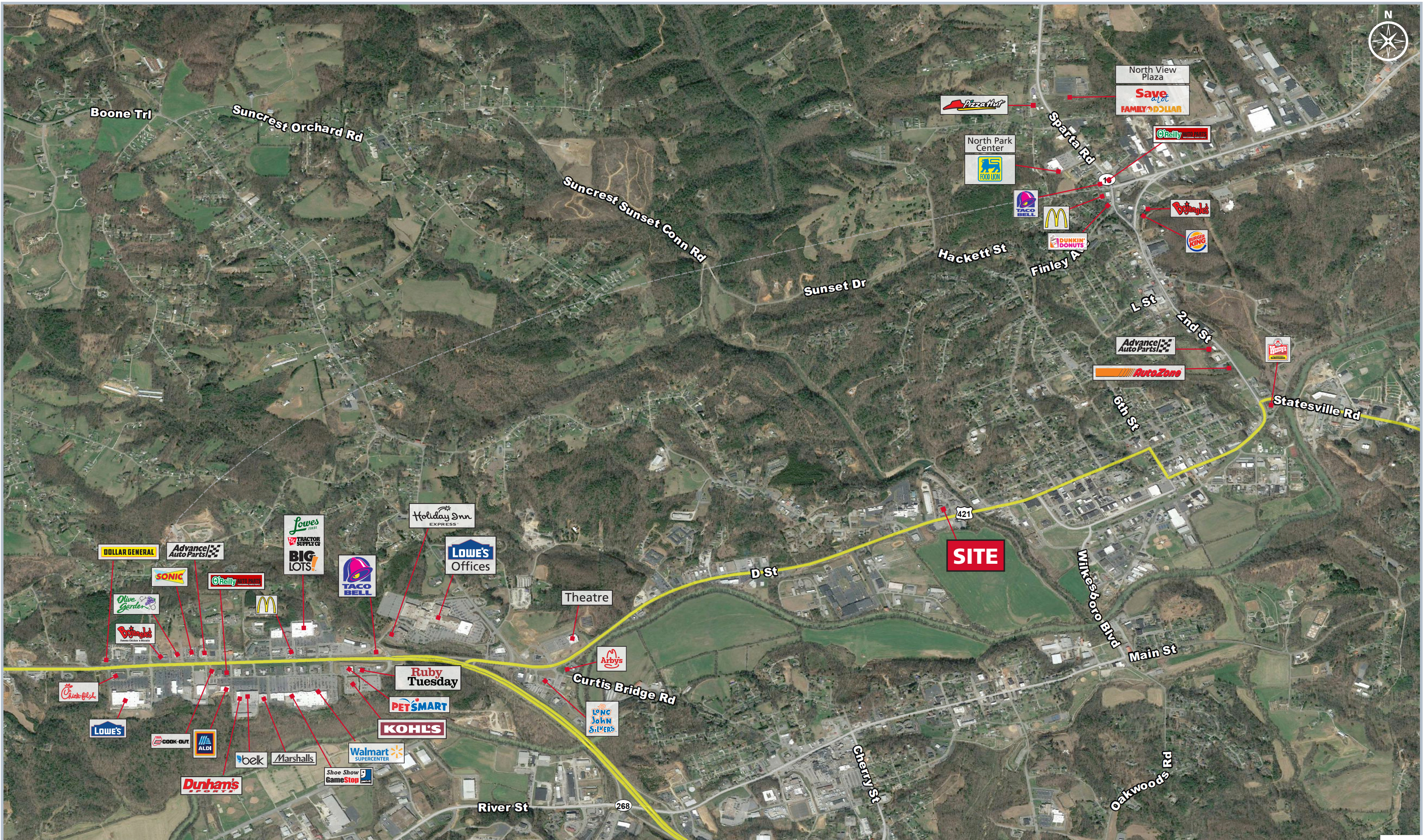
TRAFFIC COUNTS 2018 (NCDOT)

- 17,000 VPD on D Street

© 2020 The Providence Group. All rights reserved. The information above has been obtained by sources deemed reliable. While we do not doubt its accuracy, we have not verified it and make no guarantee, warranty, or representation of it. It is your responsibility to independently confirm its accuracy and completeness. You and your advisors should conduct a careful, independent investigation of the property to determine to your satisfaction the suitability of the property for your needs.

300 West Summit Ave. Suite 250 | Charlotte, NC 28203 | Phone (704) 365-0820 | www.PROVIDENCEGROUP.COM

Henry Breaux | hbreaux@providencegroup.com | Andrew Tanneberger | atanneberger@providencegroup.com



AERIAL