



**2,679 SF  
AVAILABLE**



2929 MONROE WAY | MONROE, NC 28110



- Available Space: 2,679 SF
- Asking Rate: \$28.00 / SF
- NNN's: \$7.03 NNN
- Directly across from Poplin Place which is anchored by Target, TJ Maxx, Big Lots, Ross Dress for Less and PetSmart
- Monroe Promenade is a strip retail development located on an outparcel to a 100,000 sf medical office complex anchored by Presbyterian Hospital
- High street visibility with over 50,000 cars per day on Hwy 74
- Turnover date 9/1/2020

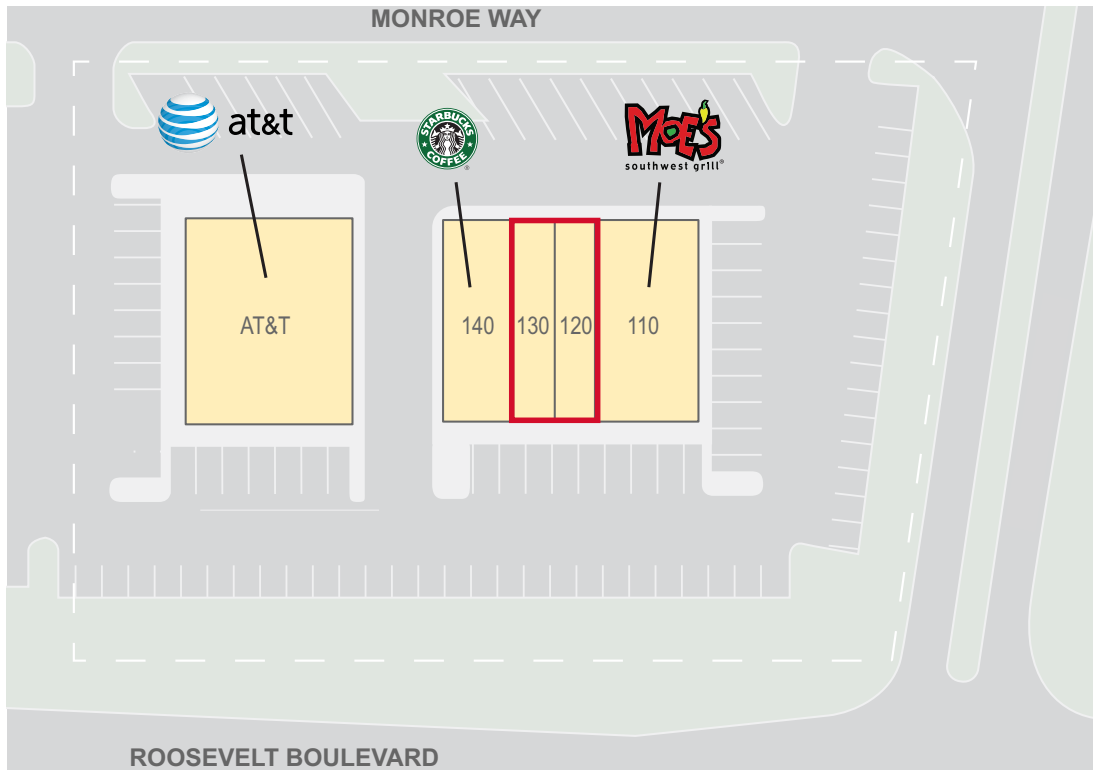
POPULATION	3,331	20,204	67,997
AVERAGE HH INCOME	\$60,429	\$69,056	\$76,091
MEDIAN HH INCOME	\$48,581	\$55,484	\$61,329
BUSINESS ESTABLISHMENTS	213	1,045	2,605
DAYTIME EMPLOYMENT	2,550	13,730	31,668

© 2019 The Providence Group. All rights reserved. The information above has been obtained by sources deemed reliable. While we do not doubt its accuracy, we have not verified it and make no guarantee, warranty, or representation of it. It is your responsibility to independently confirm its accuracy and completeness. You and your advisors should conduct a careful, independent investigation of the property to determine to your satisfaction the suitability of the property for your needs.

John Varol | [jvarol@providencegroup.com](mailto:jvarol@providencegroup.com) | [www.PROVIDENCEGROUP.COM](http://www.PROVIDENCEGROUP.COM)

# MONROE PROMENADE

2929 MONROE WAY | MONROE, NC 28110



## TRAFFIC COUNTS 2018 (NCDOT)

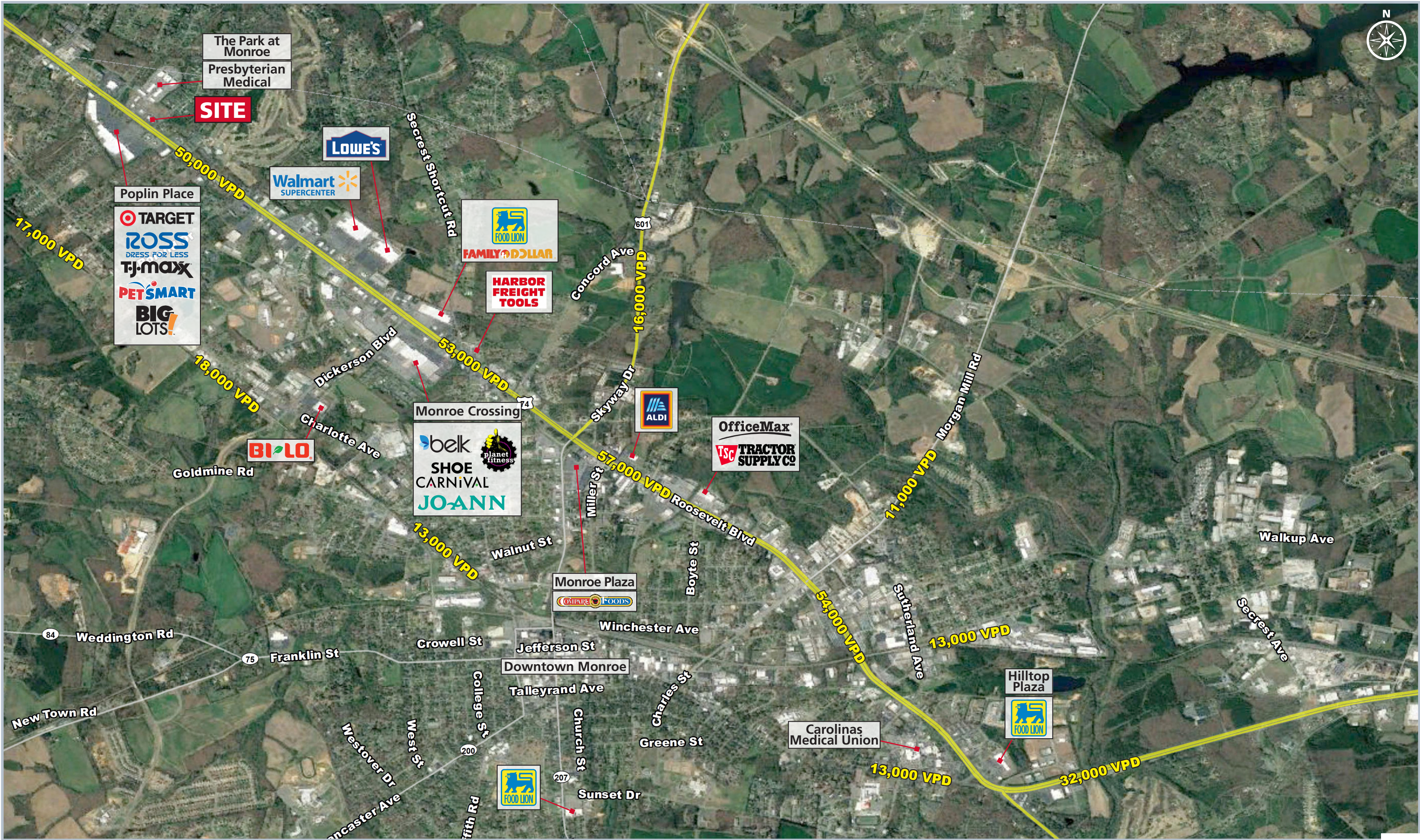
- 51,500 VPD on Roosevelt Blvd. (US-Hwy 74)

© 2019 The Providence Group. All rights reserved. The information above has been obtained by sources deemed reliable. While we do not doubt its accuracy, we have not verified it and make no guarantee, warranty, or representation of it. It is your responsibility to independently confirm its accuracy and completeness. You and your advisors should conduct a careful, independent investigation of the property to determine to your satisfaction the suitability of the property for your needs.

300 West Summit Ave. Suite 250 | Charlotte, NC 28203 | Phone (704) 644-4589

John Varol | jvarol@providencegroup.com | www.PROVIDENCEGROUP.COM





AERIAL