

# SURPLUS LAND AVAILABLE

8030 BLAIR RD | MINT HILL, NC 28227



# SURPLUS LAND AVAILABLE

8030 BLAIR RD. | MINT HILL, NC 28227

## PROPERTY INFORMATION

OFFERING PRICE: \_\_\_\_\_ \$325,000  
 SIZE: \_\_\_\_\_ 0.62 Acre Outparcel  
 ZONED: \_\_\_\_\_ B-P Planned Business  
 DO-B Downtown Overlay

## PROPERTY DESCRIPTION

Outparcel to Aldi Food Store

DEMOGRAPHICS (2020)	1 MILE	3 MILE	5 MILE
POPULATION	2,845	29,017	112,657
AVERAGE HH INCOME	\$96,038	\$95,353	\$85,631
MEDIAN HH INCOME	\$76,347	\$81,752	\$74,041
BUSINESS ESTABLISHMENTS	370	1,097	2,993
DAYTIME EMPLOYMENT	2,003	7,206	19,140



Malcolm McLean | 704.644.4588  
 mmclean@providencegroup.com

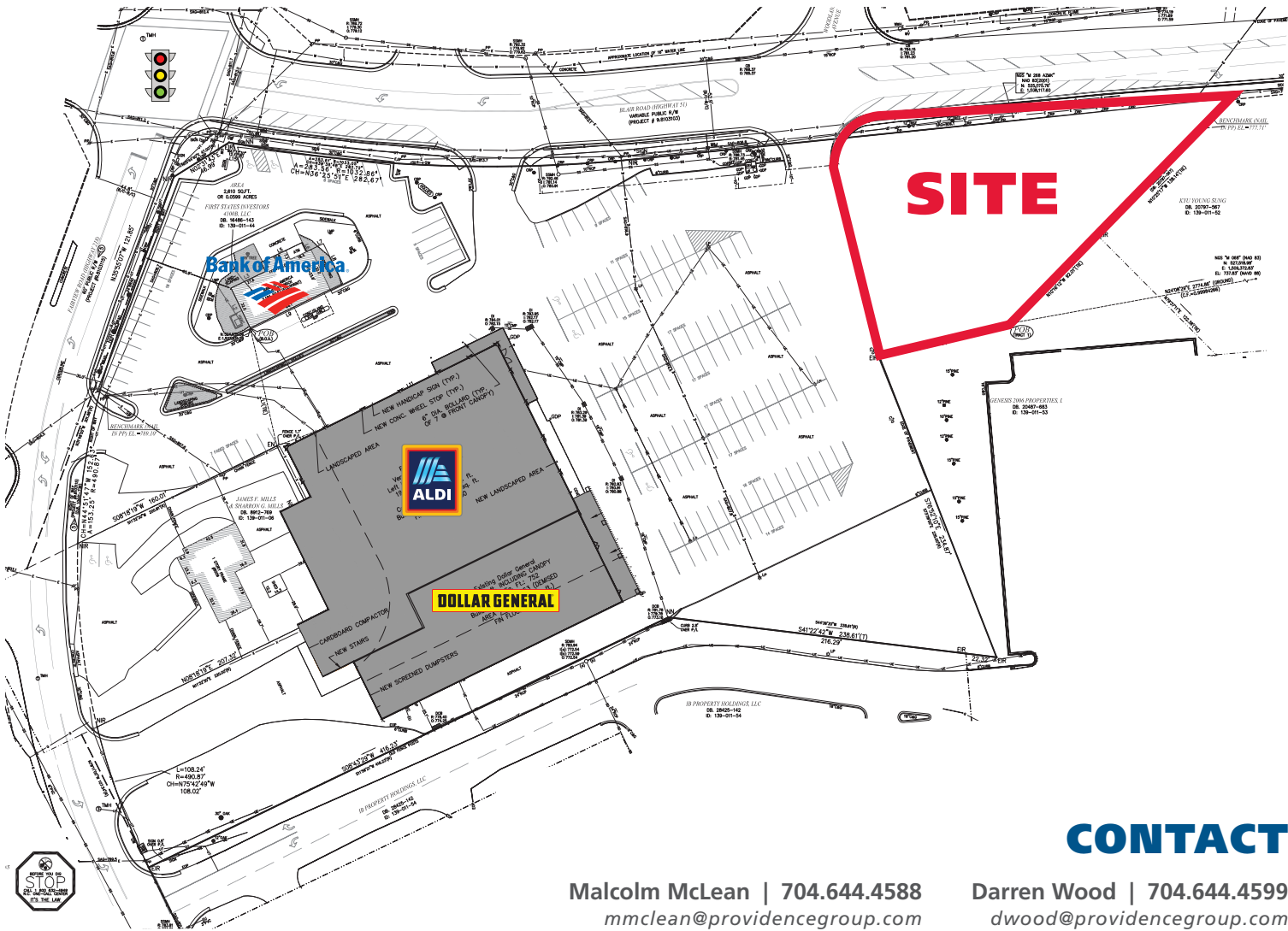
Darren Wood | 704.644.4599  
 dwood@providencegroup.com

## CONTACT

© 2021 The Providence Group. All rights reserved. The information above has been obtained by sources deemed reliable. While we do not doubt its accuracy, we have not verified it and make no guarantee, warranty, or representation of it. It is your responsibility to independently confirm its accuracy and completeness. You and your advisors should conduct a careful, independent investigation of the property to determine to your satisfaction the suitability of the property for your needs.

# SURPLUS LAND AVAILABLE

8030 BLAIR RD | MINT HILL, NC 28227



## CONTACT

Malcolm McLean | 704.644.4588  
mmclean@providencegroup.com

Darren Wood | 704.644.4599  
dwood@providencegroup.com

© 2021 The Providence Group. All rights reserved. The information above has been obtained by sources deemed reliable. While we do not doubt its accuracy, we have not verified it and make no guarantee, warranty, or representation of it. It is your responsibility to independently confirm its accuracy and completeness. You and your advisors should conduct a careful, independent investigation of the property to determine to your satisfaction the suitability of the property for your needs.



300 West Summit Ave | Suite 250 | Charlotte, North Carolina 28203  
WWW.PROVIDENCEGROUP.COM





**SITE**

**CONTACT**

Malcolm McLean | 704.644.4588  
mmclean@providencegroup.com

Darren Wood | 704.644.4599  
dwood@providencegroup.com